

A review and Buckling analysis of stiffened plate

Ashutosh kumar¹, Rachayya R. Arakerimath²

¹ ME Student, Department of Mechanical Engineering, Alard College of Engineering & Management, Pune, India

² Professor, Department of Mechanical Engineering, G.H. Rasoni COEM, Pune, India

Abstract: It happens many times that the structure is safe in normal stress and deflection but fails in buckling. Buckling analysis is one of the method to go for such type of analysis. It predicts various modes of buckling. Plates are used in many applications such as structures, aerospace, automobile etc. Such structures are subjected to heavy uniformly distributed load and concentrated load many times over it's life span. Strength of these structures are increased by adding stiffeners to its plate. This paper deals with the analysis of rectangular stiffened plates which forms the basis of structures. A comparison of stiffened plate and unstiffened plate is done for the same dimensions. In order to continue this analysis various research papers were studied to understand the previous tasks done for stiffened plate. Hyper mesh and Nastran is used to do the analysis. Buckling analysis is done with aspect ratio of 2. Rectangular flat bar is used as stiffener.

Key Words: Stiffened Plate; Dynamic load; Buckling; Aspect ratio; Buckling Analysis

I. Introduction

In order to increase the strength of structure, plates are one of the common option. These plates are usually two dimensional with thickness very low as compared to other two dimensions. In order to avoid any buckling of these plates, are often strengthened by stiffeners such as angle, bar, etc. Stiffeners mounted on the plate increases the resistance to buckling by increasing the overall stiffness. Such structures are very common in automobile, construction, aerospace etc.

One of the relevant use of plates are in electrically operated overhead cranes. These cranes are having box structure which are rectangular in shape. These box structures consists of two web plates, top and bottom flanges along with diaphragm and stiffeners. Diaphragm divides the box structure basically web plate in panel while stiffener stiffens the web plate

II. Need Of Research

Box structure of electrically operated overhead travelling cranes are subjected to heavy load which gets transmitted through the web plates. These structures are normally safe in normal and shear stresses. In order to avoid the buckling effect industries are either increasing the thickness of the plate or adding the stiffeners.

In such a case some analysis and understanding of the buckling behavior of stiffened and unstiffened flat plate is necessary. Hence this paper is considering the analysis of rectangular plate with aspect ratio 2. Analysis will be done for two separate plate –one with stiffener and one without stiffener. This analysis will give the nature of plate buckling and corresponding mode shapes.

III. Literature Review

J Rhodes [1], presented a paper on the buckling and post buckling behavior of thin plates. It has made a somewhat brief and superficial study of plate element and structure behavior when subjected to local buckling. The author has made a detailed study of all the process being followed till now to understand the plate behavior till now. Still it is clear that there are much more to learn about it.

J Rhodes [2], presented a paper on the buckling of thin plate and early work on rectangular tube. He performed extensive work on the buckling of tubular structure. Post buckling behavior of the tubular thin tube structure was also detailed. Analysis of various sections such as Z,C,and H sections were done based on previous study. Elastic analysis of plated were performed with simply supported unloaded end and corresponding load deflection curve were outlined. Plastic mechanism analysis were also performed and corresponding constant values were created for Empirical.

N. Raghu Prasad, Jeeoot Singh [3], presented a paper on the buckling of plates with cutout. FEA methods were used to analyze the buckling of these plates. These plates were having simply supported ends. Various method of meshing were used to get optimized result. This analysis was further extended to the study of plate with partial edge compression. Partial edge compression were applied in such a way that the total load on the

plate remains same. It was concluded in the result that the pattern of stress were varying by small amount for a plate with and without cutout

Ali Reza Pouladkhan, Jalil Emadi, Majid Safemehr [4], presented a paper on numerical study of the buckling of thin plates. Equilibrium equation analysis was used to derive the buckling load equation. Based on the buckling load equation buckling load was calculated. This exercise was performed for simply supported rectangular plate. The results were further cross verified by using FEA software. Abaqus software was used to do the analysis. Various meshing techniques were used to get the optimized results. Shell elements were used to do the analysis. The numerical solution and FEA solution both were acceptable from matching to each other.

Sang-Rai Cho, Hyun-seung Lee [5], presented a paper for stiffened plate subjected to lateral collision. This paper was basically useful for the ship structure where the plate panels were subjected to lateral loads. Lateral collision experiments were performed on 33 stiffened plates and corresponding results were tabulated. The test model was created with strain gauge located on them. The striker was also prepared with angle welded to it to strike on the localized area. The purpose was to get the pattern of plate buckling because of it. Analytical method was used for further tabulation of kinetic energy and potential energy stored in it.

Ghania Ikhenazen, Messaoud Saidani [6], presented a paper on buckling analysis of an isotropic plate which was subjected to in plane patch loading. Total energy concept was being utilized initially which was later analyzed with FEA. Eight noded quadrilateral element was used for FEA. Based on analysis charts were produced for buckling factor vs aspect ratio. Similar charts were produced for span to width ratio to buckling factor. Another set of loading was used where the loading pattern was point load. Similar graphs were presented as for earlier graph.. The results were in good agreement with previous task performed in the same field.

Khosrow Ghavami, Mohammad Reza Khedmati [7], presented a paper on numerical and experimental investigation of stiffened plate under compression loading. This paper presented analysis on the nonlinear analysis of stiffened plate subjected to axial compression load and considering post buckling behavior up to collapse. In order to perform the analysis plates with stiffener in both longitudinal and transversal direction and only in longitudinal direction were considered. Two series of experiments were performed. In the first series of experiment the stiffeners were having rectangular, L and T profiles along with their spacing were studied while in second series the stiffener profiles were of rectangular shapes were considered. In order to perform the analysis FEA software was used as Ansys. In order to get the results testing rigs were also used. Various collapse modes were observed.

Richard Villavicencio, Sang-Rai Cho, Carlos Guedes soares [8], presented a paper on deformation process of web of a girder used in hull structure of small tanker when subjected to lateral impact. Scaled model was used for the analysis purpose. The model was having top plate stiffened by stiffeners. The crushing of model was found to be defined by the deformation of stringers attached to the flanges of model. Impact test were done on the model with the load drop setups. Plastic range on the model sheet was experienced by performing two impact velocities of load on it. Results were tabulated out and were further verified by FEA software LS Dyna. The results were in good agreement to each other.

3.1 Outcome of literature review

Many experiments were performed to know the Buckling behavior of plates with and without stiffeners. Optimal placement of stiffeners were analyzed to understand its effect. Analytical, Numerical and Experimental methods were used whose results were in good agreements to each other.

Various differential equations were produced for different closed and open sections. Main experiments were performed to determine the effect of transverse force on the panel.

IV. Buckling Analysis Of Plate

4.1 Basic Theory

Equilibrium method is one of the most common method to do the analysis of plate structure.

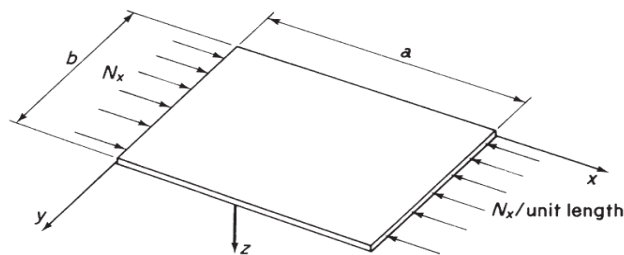


Figure-1 Plate with compressive force along X-axis [9]

For the above shown figure the standard differential equation comes to be :

$$D \left(\frac{d^4(w)}{dx^4} \right) + 2 * D \left(\frac{d^4(w)}{d(x)^2 d(y)^2} \right) + D \left(\frac{d^4(w)}{dy^4} \right) = N_x \left(\frac{d^2(w)}{dx^2} \right) \quad (1)$$

Where N_x is the internal force acting on the middle plane of the plate. D is the plate rigidity ratio and w is the deflection of plate along the thickness of the plate.

In order to have a trivial solution for such problem the main consideration is to have the initial, flat configuration of equilibrium. However the coefficient of governing equation depends on the magnitudes of the stress resultants, which are in turn, connected with the applied in plane external forces, and we can find values of these loads for which nontrivial solution is possible. The smallest value of these loads will correspond to critical load. A more general formulation of the equilibrium method transforms the stability problem into an eigenvalue problem. For this purpose we multiply a reference value of the stress resultant (N_x) by load parameter λ , ie.

$$N_x = \lambda N_x \quad (2)$$

By substituting equation-2 in equation -1 we get:

$$\nabla^4(w) + \lambda \frac{N_x}{D} \left(\frac{d^2(w)}{dx^2} \right) = 0 \quad (3)$$

Following assumptions will be applicable throughout the discussion:

- (i) Prior to loading plate is ideally flat and all the externally applied load is acting on the mid plane.
- (ii) States of stress described by equations of linear plane elasticity. Any change in the plate dimensions prior to buckling will be ignored.
- (iii) The plate bending equations are described by Kirchhoff's plate bending theory.

Following two cases will be considered for buckling study:

- (i) Simply supported rectangular plate
- (ii) Simply supported rectangular plate with stiffener at mid along applied force.

(i) Simply supported rectangular plate

Simply supported plate with load acting along X axis as shown below:

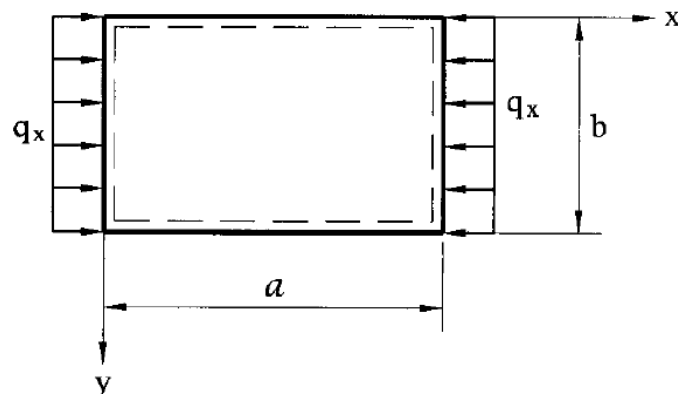


Figure-2 simply supported plate with compressive force along x axis [9]

Critical load for this case is given as[4]:

$$q_{xcr} = \frac{4D\pi^2}{b^2}, \quad \sigma_{x,cr} = \frac{q_{x,cr}}{h}, \quad \lambda = \frac{q_{xcr}}{q_x} \quad (4)$$

Where,

$$D = \frac{Eh^3}{12(1-\nu^2)}$$

h=Plate thickness

(ii) Simply supported rectangular plate with stiffener at mid along applied force

Figure-3 shows the required data as per this topic. The plate is subjected to in plane compressive forces, uniformly distributed along the edges $x=0, x=a$. Longitudinal rib may be of any shape

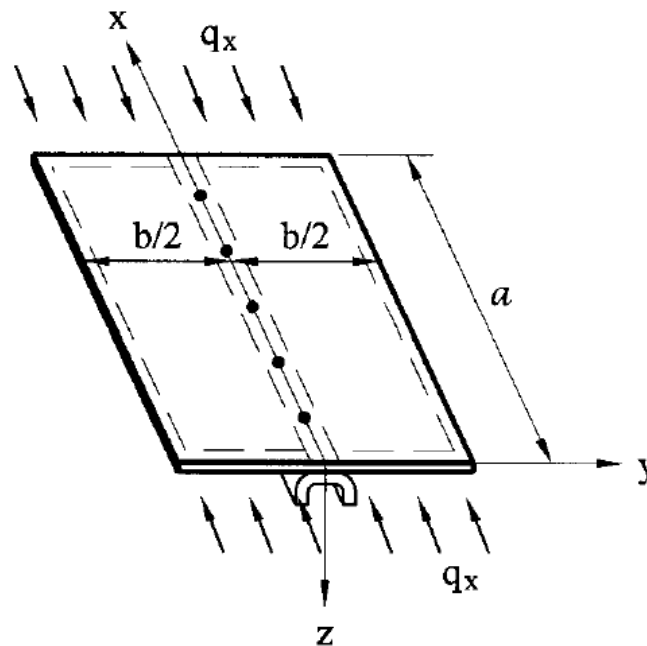


Figure-3 Simply supported plate with stiffener at mid [9]

In this analysis we will consider the buckling analysis of the two halves and stiffener separately.

In order to get the desired solution we will apply the equation 2 to the one half of the plate with the standard solution as below

$$w(x, y) = F_Y \sin\left(\frac{m\pi x}{a}\right) \quad (5)$$

Putting the above equation in equation-2 we get:

$$D \left(\frac{d^4(F_Y)}{dy^4} \right) - 2 \left(\frac{m\pi}{a} \right)^2 \frac{d^2 F_Y}{dy^2} + \left(\frac{m\pi}{a} \right)^2 \left[\left(\frac{m\pi}{a} \right)^2 - \frac{q_x}{D} \right] F_Y = 0 \quad (6)$$

The solution comes in the form

$$F(y) = A \cosh \alpha y + B \sinh \alpha y + C \cos \beta y + D \sin \beta y \quad (7)$$

Where,

$$\alpha = \left[\mu \left(\mu + \left(\frac{q_x}{D} \right)^{0.5} \right)^{\frac{1}{2}} \right], \quad \beta = \left[\mu \left(\left(\frac{q_x}{D} \right)^{0.5} - \mu \right)^{\frac{1}{2}} \right] \quad \& \quad \mu = \frac{m\pi}{a} \quad (8)$$

The boundary conditions on the edge $y=0.5b$ are:

$$w = 0, \quad \frac{d^2 w}{dy^2} = 0 \quad \text{at } y = 0.5 \quad (9)$$

Here it will be assumed that the plate is buckled together with the rib, then the bent surface of plate must be symmetric about the line $y=0$. This results in the below mentioned condition:

$$\frac{dw}{dy} = 0, \text{ at } y = 0 \quad (10)$$

The difference in the reaction forces from the two strip of the plate will be represented as below:

$$R_y = -D \left[\frac{d^3w}{dy^3} + (2 - \nu) \frac{d^3w}{dydx^2} \right] \quad (11)$$

This reaction will be transmitted to the rib. Since the plate and rib both are of same material the first part will be of importance only while the second part will get cancelled out.

If we assume that rib along with the plate is subjected to the compressive force then the governing equation will be as below:

$$EI_i \frac{d^4w}{dx^4} + \sigma_x A_i \frac{d^2w}{dx^2} + 2D \frac{d^3w}{dy^3} = 0, \text{ at } y = 0 \quad (12)$$

Where I_i and A_i are the second moment of inertia and area of the rib cross section, respectively.

Few parameters are required to be introduced here as below:

$$\gamma = \frac{EI_i}{Db}, \zeta = \frac{a}{b}, \delta = \frac{A_i}{bh} \quad (13)$$

Introducing the equation -7 into the conditions of equation 9, 10 & 13, we obtain a system of linear homogeneous equations for A, B, C, D. Equating the determinant of this system to zero, give the below equation:

$$\left(\frac{1}{b\alpha} \tanh\left(\frac{b\alpha}{2}\right) - \frac{1}{b\beta} \tanh\left(\frac{b\beta}{2}\right) \right) \left(\frac{\gamma m^2}{\alpha^2} - K\delta \right) \frac{(m^2 \pi^2)}{\alpha^2} - \frac{4m\sqrt{k}}{\alpha} = 0 \quad (14)$$

Where,

$$k = \frac{\sigma_{x,cr}}{\sigma_{x,E}}$$

And,

$$\sigma_{x,cr} = \frac{q_{x,cr}}{h}, \sigma_{x,E} = \frac{4D\pi^2}{b^2h} \quad (15)$$

For $m=1$ & $\zeta > 2$, its solution using the equation 13 the expression for critical stress is achieved as :

$$\sigma_{x,cr} = \frac{\pi^2 D (1 + \zeta^2)^2 + 2\gamma}{b^2 h \zeta^2 (1 + 2\delta)} \quad (16)$$

4.2 Analytical analysis.

In order to perform the analytical analysis we will consider the two pre discuss cases to understand the stiffener effect on buckling

.Input Data (Kindly refer Figure2 and 3 for pictorial view)

Table-1 Input data sheet

Parameter	Case-1	Case-2
a(m)	2400	2400
b(m)	1200	1200
h(m)	0.006	0.006
stiffener(mm)	NA	50X5-2400
E(Mpa)	2.1-e5	2.1-e5
Poisson's ratio	0.3	0.3
Load on the edge b(N)	500	500

Table-2 Output Data (Result)

Parameter	Case-1	Case-2	Resource equation
$q_{x,cr}$ (N/mm)	114	244	Equation-4 &
Eigen Value	5.2	11.2	Equation-15

4.3 FEA Analysis of Case-1 and Case-2

In FEA Buckling analysis is done and the result is termed in term of Eigen value. Buckling analysis of plate, Beams or column is divided into two types:

- (i) Linear Buckling
- (ii) Non-Linear Buckling

This paper deals with linear buckling. It estimates the maximum loads that can be supported prior to the structural instability or collapse. This is also known as Eigen value buckling. The characteristic equation of buckling analysis is given by below equation:

$$[K]\phi_i = \lambda[M] \quad (17)$$

Where,

K=stiffness matrix; λ =Eigen Value; M=Mass matrix

ϕ_i = Eigen value or mode shapes

Initially linear static analysis is required to be performed. It then formulate M matrix from the reference load and then the below mentioned expression is formed:

$$[k - \lambda M]\phi = 0 \quad (18)$$

Then Block Lancos method is used to solve the lowest Eigen value to accomplish the buckling analysis. Then the critical load is given by below mentioned equation:

$$P_{cr} = \lambda_{cr} P; \lambda_{cr} = \frac{P_{cr}}{p} \quad (19)$$

Where,

P_{cr} =Critical load, P=Applied load, λ_{cr} = Critical Eigen value

If Critical Eigen value is less than 1 then there will be buckling else no buckling. The displacement calculated in Eigen value will predict the buckling mode.

Hypermesh and Nastran software were used to do the analysis. 4 node shell elements were used to discretize the complete plate structure. After applying the boundary condition Nastran was used to do the post processing and the results of first 6 modes were divided into two cases.

Case-1-Plate without stiffener

Case-2.-Plate with stiffener.

Element type used is 4 node shell element. PShell is the element property used to give the thickness value.

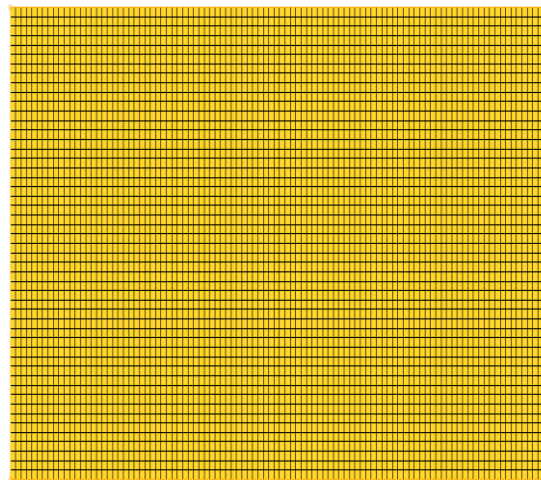


Figure-4 Mesh model of case-1

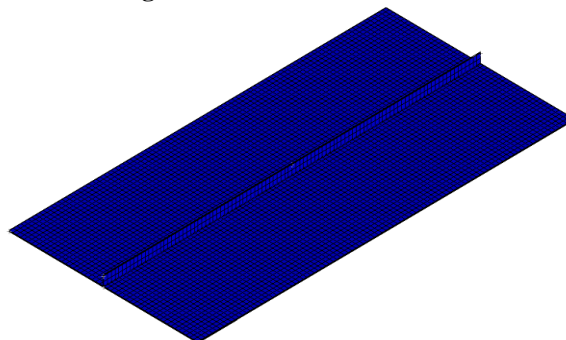


Figure-5 Mesh model of Case-2

Eigen Value result of FEA analysis
First Eigen Value

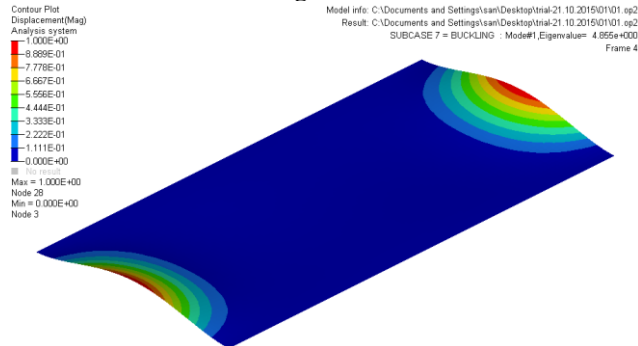


Figure-6 Plate without Stiffener

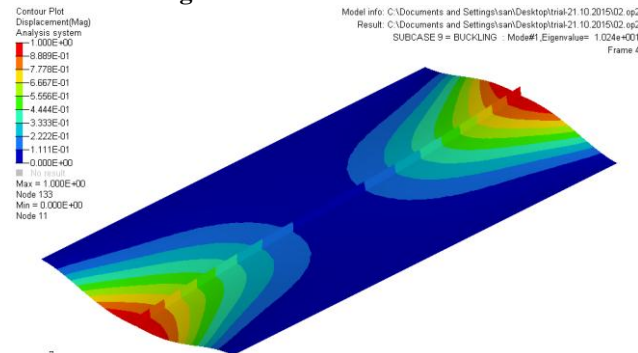


Figure-7 Plate with Stiffener

Second Eigen Value

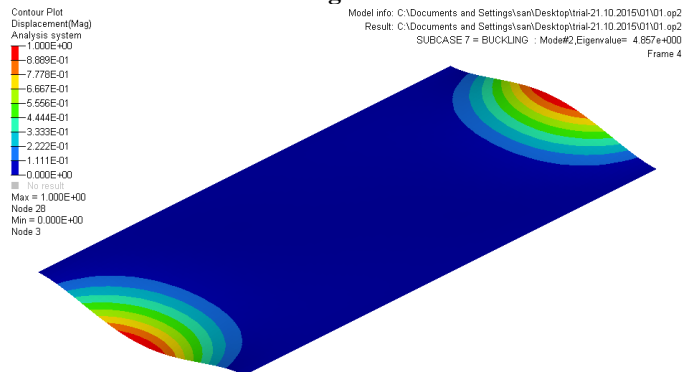


Figure-8 Plate without Stiffener

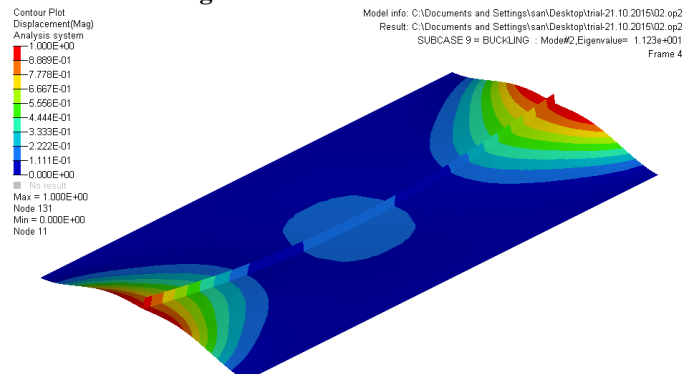


Figure-9 Plate with Stiffener

Third Eigen Value

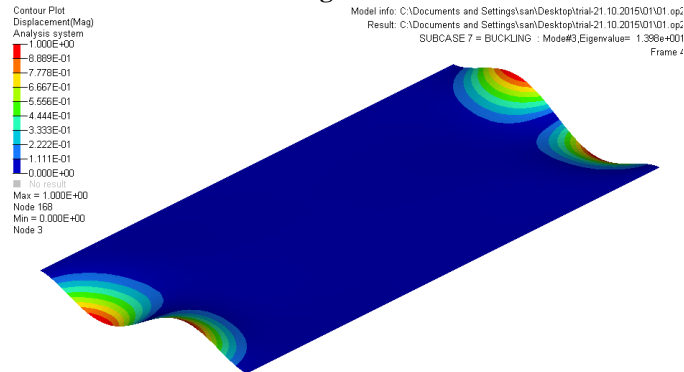


Figure-10 Plate without Stiffener

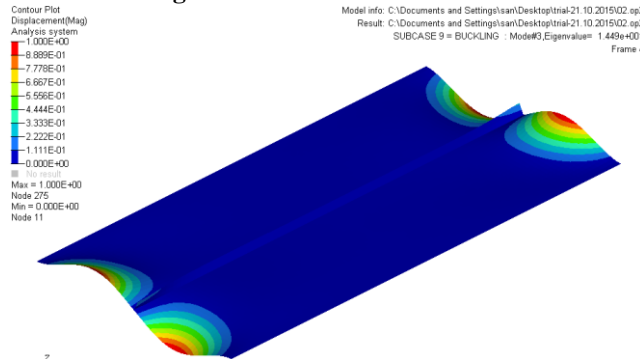


Figure-11 Plate with Stiffener

Fourth Eigen Value

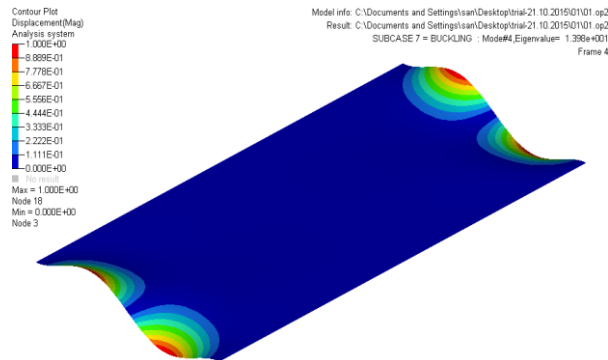


Figure-12 Plate without Stiffener

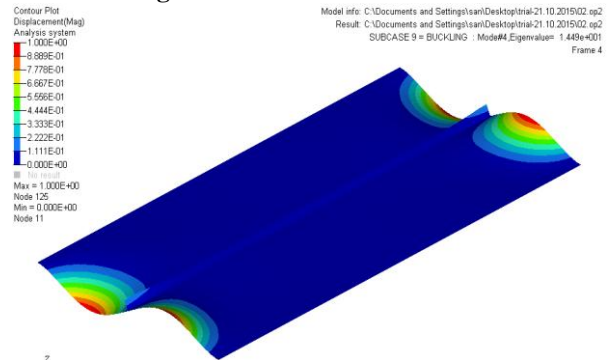


Figure-12 Plate with Stiffener

Fifth Eigen Value

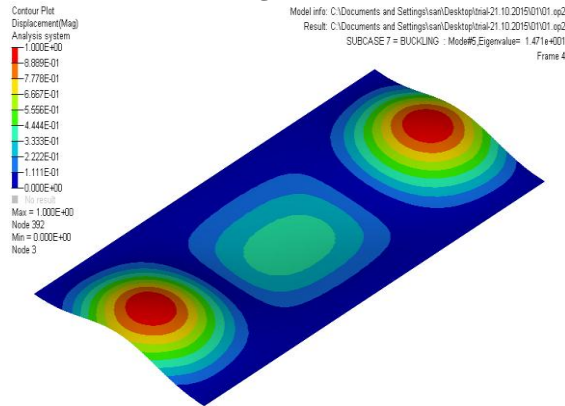


Figure-13 Plate without Stiffener

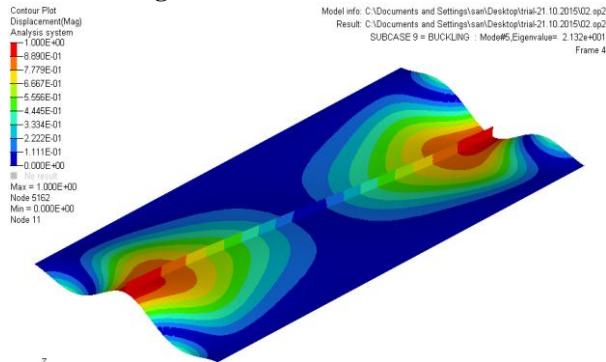


Figure-14 Plate with Stiffener

Sixth Eigen Value

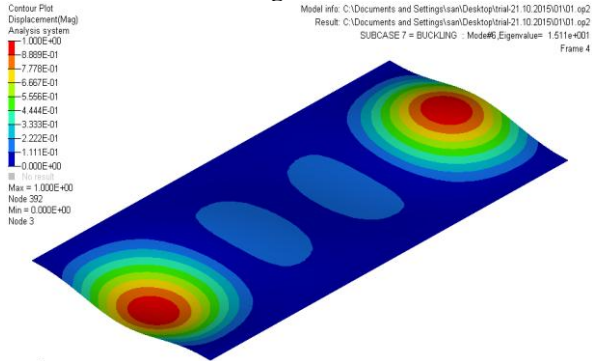


Figure-15 Plate without Stiffener

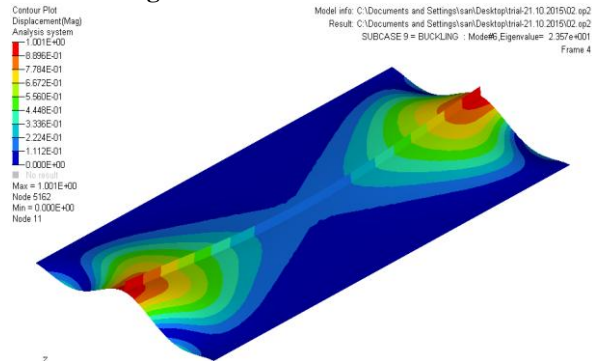


Figure-16 Plate without Stiffener

V. Results And Comparison

FEA Results Plotting

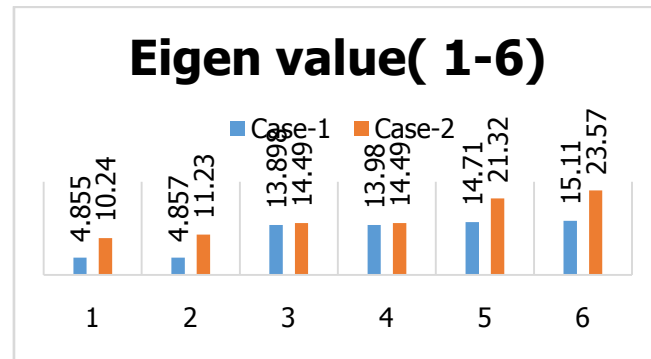


Table-3 Eigen value comparison sheet for Case-1 & Case-2

The difference between the analytical calculation of Eigen value and FEA result for the first Eigen value is 7%. It can be further reduced by refining the mesh size further.

VI. Conclusion

Analytical calculation and FEA results were in good agreement to each other. It was found that Eigen value is increasing with the addition of stiffeners.

Buckling analysis shows almost similar pattern for both cases with different mode shapes. Eigen value values are increasing according to the addition of number of stiffener is of prime importance as the other modes are having very safe value.

There is further analysis scope to analyze the same case with different stiffeners geometry.

Acknowledgement

I gratefully acknowledge Mechanical engineering department of ACEM, Pune for technical support and providing the research facilities. I would also like to thank to Dr. S.B. Padwal, Principal (ACEM, Pune) and Prof. V.R. Bajaj, HOD (Mechanical department) for their help and dedication toward my research and related research, also my friends for their directly & indirectly help, support and excellent cooperation.

References

- [1]. J Rhodes, Some observation of the post-buckling behavior of thin plates and thin walled members, Science direct, 2003
- [2]. J Rhodes, Buckling of thin plate members-and early work on rectangular tubes, Elsevier science Ltd,2002.
- [3]. N. Raghu Prasad, Jeeoot Singh, Buckling analysis of Rectangular plates with cutout and partial edge compression,IARJSET,2015.
- [4]. Ali Reza Pouladkhan, Jalil Emadi, Majid Safemehr, Numerical study of buckling of thin plates, World academy of science, engineering and technology,2011.
- [5]. Sang-Rai Cho, Hyun-seung Lee, Exprimental and analytical investigations on the response of stiffened plates subjected to lateral collision, Sciencedirect,2009.
- [6]. Ghania lkhenezzen, Messaoud Saidani, Finite element analysis of linear plates buckling under in-plane patch loading, Researchgate,2010.
- [7]. Khosrow Ghavami, Mohammad Reza Khedmati, Numerical and Experimental investigations on the compression behavior of stiffened plates,ScienceDirect, 2006
- [8]. Richard Villavicencio, Sang-Rai Cho, Carlos Guedes soares, Deformation process of web girders in small-scale tanker double hull structures subjected to lateral impact, ResearchGate,2013.
- [9]. A.K.L.Shrivastava, P.K.Datta,A.H.Seikh, Transverse vibration of stiffened plates with cutouts subjected to in-plane uniform edge loading at the plate boundary, IOS Press,2002.
- [10]. Euard Ventsel, Theodor Krauthammer, Thin Plates and shell, 2001

BIOGRAPHIES



Ashutosh Kumar is studying in ME-Mechanical design engineering at Alard college of Engineering and Management.



Dr. Rachayya R. Arakerimath is working as Dean and HOD mechanical engineering Department at GHRCOEM.He is having experience over 20 years. He is also authorized guide for Phd. students in Pune University